

# 2012-2013 Report Card for Northwest Local School District

## DISTRICT GRADE

Coming in  
2015



### Achievement

This grade combines two results for students who took the state tests. The first result answers the question – How many students passed the state test? The second result answers the question – How well did students do on the state test?

Performance Index	85.9%	B
Indicators Met	100.0%	A

## COMPONENT GRADE

Coming in  
2015



### Progress

This is your district's average progress for its students in math and reading, grades 4-8. It looks at how much each student learns in a year. Did the students get a year's worth of growth? Did they get more? Did they get less?

Value-Added	
Overall	A
Gifted	C
Students with Disabilities	C
Lowest 20% in Achievement	C

## COMPONENT GRADE

Coming in  
2015



### Gap Closing

This grade shows how well all students are doing in your district in reading, math, and graduation. It answers the question – Is every student succeeding, regardless of income, race, culture or disability?

Annual Measurable Objectives	87.5%	B
------------------------------	-------	---

## COMPONENT GRADE

Coming in  
2015



### Graduation Rate

This grade answers the question – How many ninth graders graduate in four years or five years?

Graduation Rates	
94.7% of students graduated in 4 years	A
91.9% of students graduated in 5 years	B

## COMPONENT GRADE

Coming in  
2015



### K-3 Literacy

This grade answers the question – Are more students learning to read in kindergarten through third grade? The 2014 report card will report some results. The 2015 report card will display one grade for kindergarten through grade 3.

## COMPONENT GRADE

Coming in  
2015



### Prepared for Success

This grade answers the question – Are students who graduate from our district ready for college or a career? There are six ways to show that graduates are prepared. In the 2014 school year, the report card will show results for the six areas. The 2015 report card will display one grade combining the results of all six ways of showing graduates are prepared.

## COMPONENT GRADE

Coming in  
2015

## Achievement



This grade combines two results for students who took the state tests. The first result answers the question – How many students passed the state test? The second result answers the question – How well did students do on the state test?

COMPONENT GRADE

Coming in  
2015

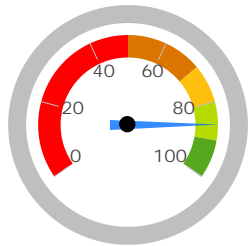
GRADE

B

### Performance Index

The Performance Index measures the test results of every student, not just those who score proficient or higher. There are six levels on the index and districts receive points for every student in each of these levels. The higher the achievement level the more the points awarded in the district's index. This rewards schools and districts for improving performance.

Performance Index

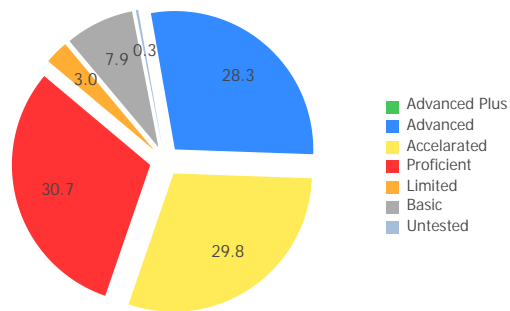


85.9%

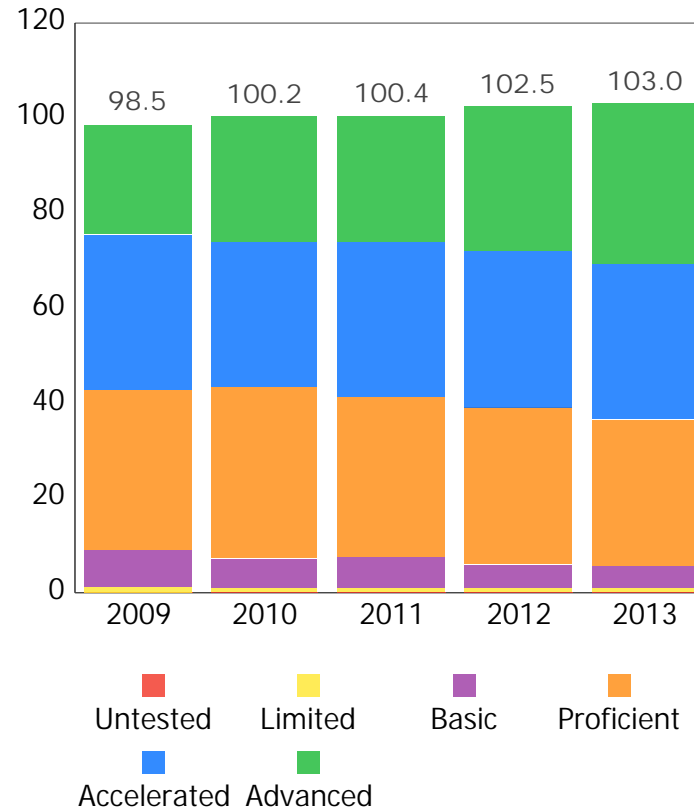
103.0 of a possible 120.0

- A = 90.0 - 100.0%
- B = 80.0 - 89.9%
- C = 70.0 - 79.9%
- D = 50.0 - 69.9%
- F = 0.0 - 49.9%

Achievement Level	Pct of Students		Points for this Level	=	Points Received
Advanced Plus	0.0	x	1.3	=	0.0
Advanced	28.3	x	1.2	=	34.0
Accelerated	29.8	x	1.1	=	32.7
Proficient	30.7	x	1.0	=	30.7
Basic	7.9	x	0.6	=	4.7
Limited	3.0	x	0.3	=	0.9
Untested	0.3	x	0.0	=	0.0
					103.0



Performance Index Trend



GRADE

**A**

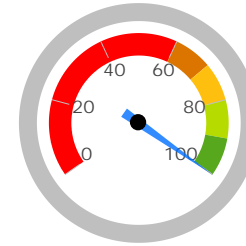
Indicators Met

Indicators Met measures how many students have passed the state tests at a minimum level, called proficient, or higher. Test results are reported for each student in a grade and subject. At least 75 percent of students must pass to get credit for the indicator. Starting in the 2013-14 school year, a district or school needs to have 80 percent of their students pass at a minimum level or higher in order to "meet" an indicator.

Indicators Met %

**100.0%**  
24.0 out of 24.0

- A = 90.0 - 100.0%
- B = 80.0 - 89.9%
- C = 70.0 - 79.9%
- D = 50.0 - 69.9%
- F = 0.0 - 49.9%



Grades 3-5

<b>3rd Grade</b>	Mathematics	84.7%	✓
	Reading	88.3%	✓
<b>4th Grade</b>	Mathematics	89.5%	✓
	Reading	91.9%	✓
<b>5th Grade</b>	Mathematics	83.4%	✓
	Reading	86.0%	✓
	Science	81.5%	✓

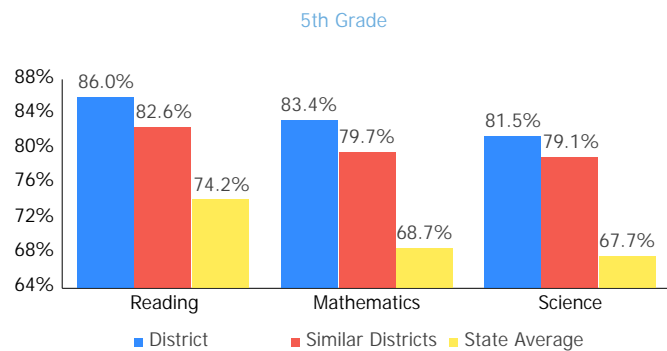
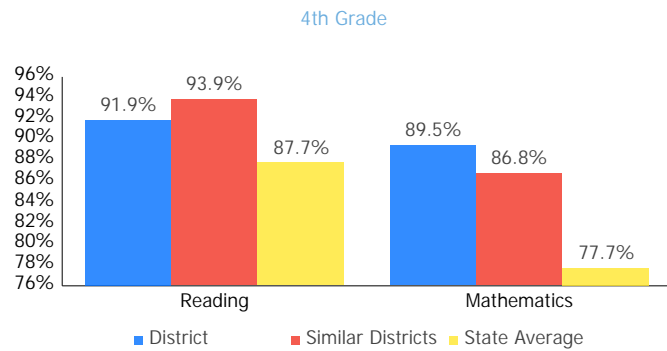
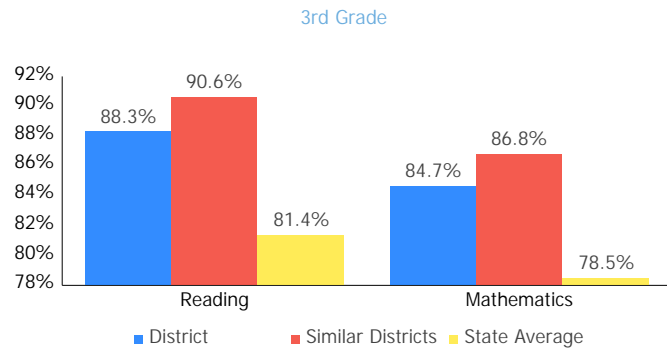
Grades 6-8

<b>6th Grade</b>	Mathematics	89.2%	✓
	Reading	91.2%	✓
<b>7th Grade</b>	Mathematics	89.5%	✓
	Reading	91.6%	✓
<b>8th Grade</b>	Mathematics	92.1%	✓
	Reading	96.1%	✓
	Science	90.8%	✓

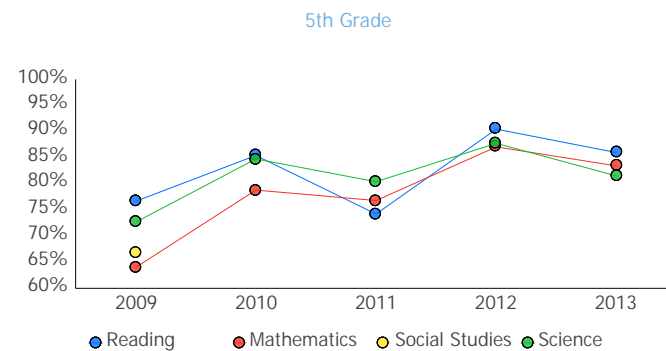
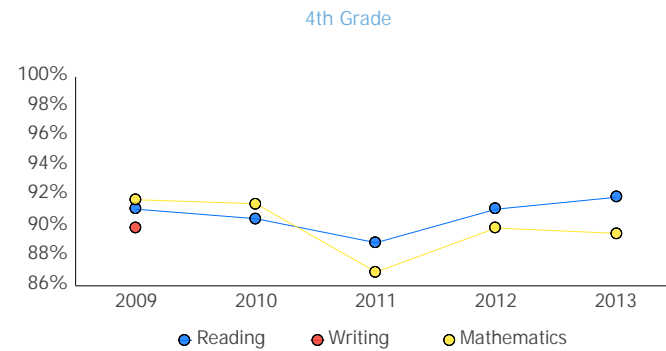
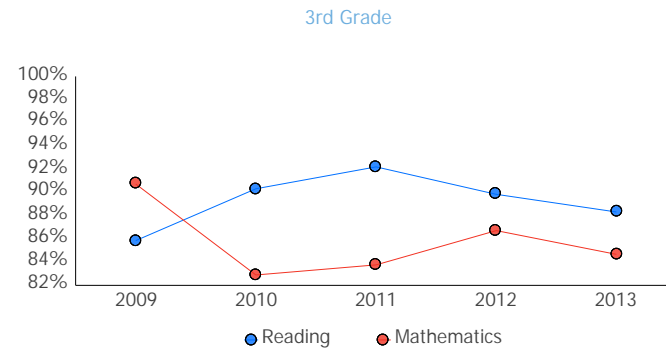
Ohio Graduation Test

<b>OGT, 10th Graders</b>	Mathematics	94.3%	✓
	Reading	92.4%	✓
	Science	84.7%	✓
	Social Studies	86.6%	✓
	Writing	88.5%	✓
<b>OGT, 11th Graders</b>	Mathematics	94.2%	✓
	Reading	94.2%	✓
	Science	88.4%	✓
	Social Studies	89.5%	✓
	Writing	94.8%	✓

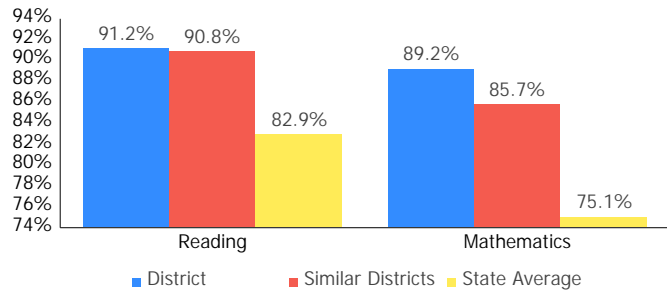
Proficiency Percent Comparison by Grade



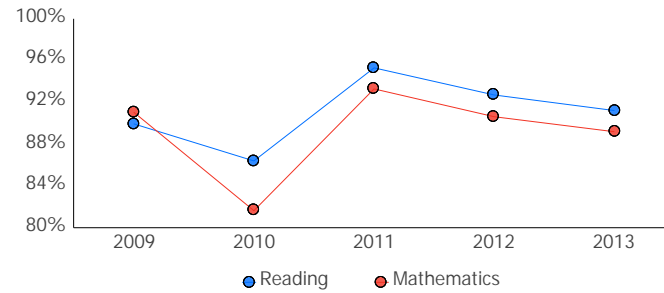
Proficient Percent Trend by Grade



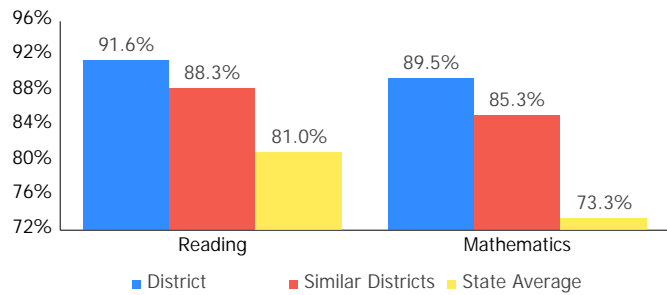
6th Grade



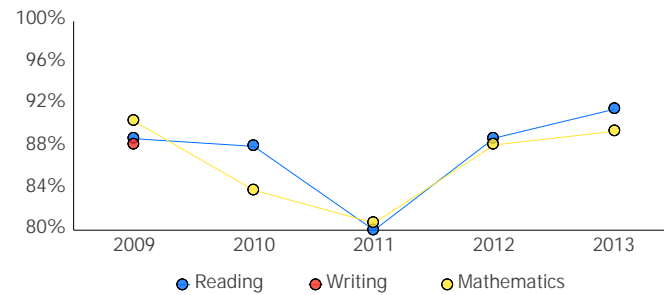
6th Grade



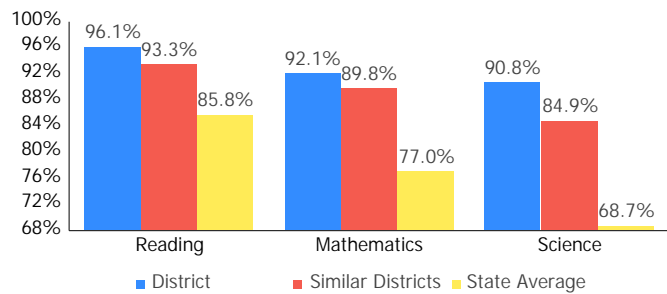
7th Grade



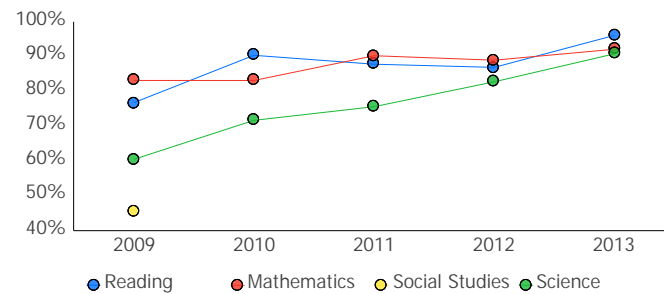
7th Grade



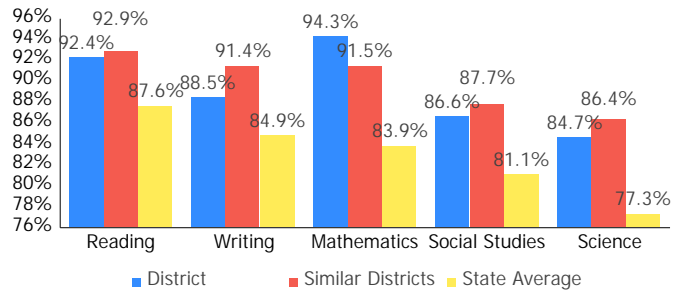
8th Grade



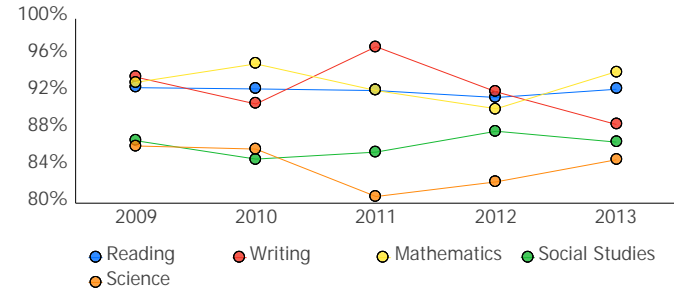
8th Grade



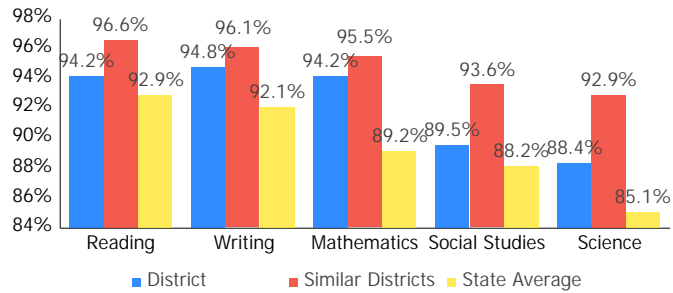
10th Grade OGT



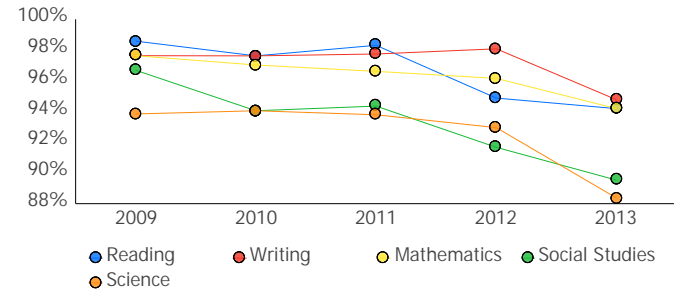
10th Grade OGT



11th Grade Cumulative OGT



11th Grade Cumulative OGT



## Progress



This is your district's average progress for its students in math and reading, grades 4-8. It looks at how much each student learns in a year. It answers the question – Did the students get a year's worth of growth? Did they get more? Did they get less?

COMPONENT GRADE

Coming in  
2015

GRADE	<b>Overall</b>
A	This measures the progress for all students in math and reading, grades 4-8.
GRADE	<b>Gifted Students</b>
C	This measures the progress for students identified as gifted in reading, math, and/or superior cognitive ability.
GRADE	<b>Students in the Lowest 20% in Achievement</b>
C	This measures the progress for students identified as the lowest 20% statewide in reading and math achievement.
GRADE	<b>Students with Disabilities</b>
C	This measures the progress for students with disabilities.
GRADE	<b>High School</b>
Coming in 2016	A High School measure of progress will be implemented in the 2015-16 school year.

## Progress Details

This table shows the Progress scores by test grade and subject.

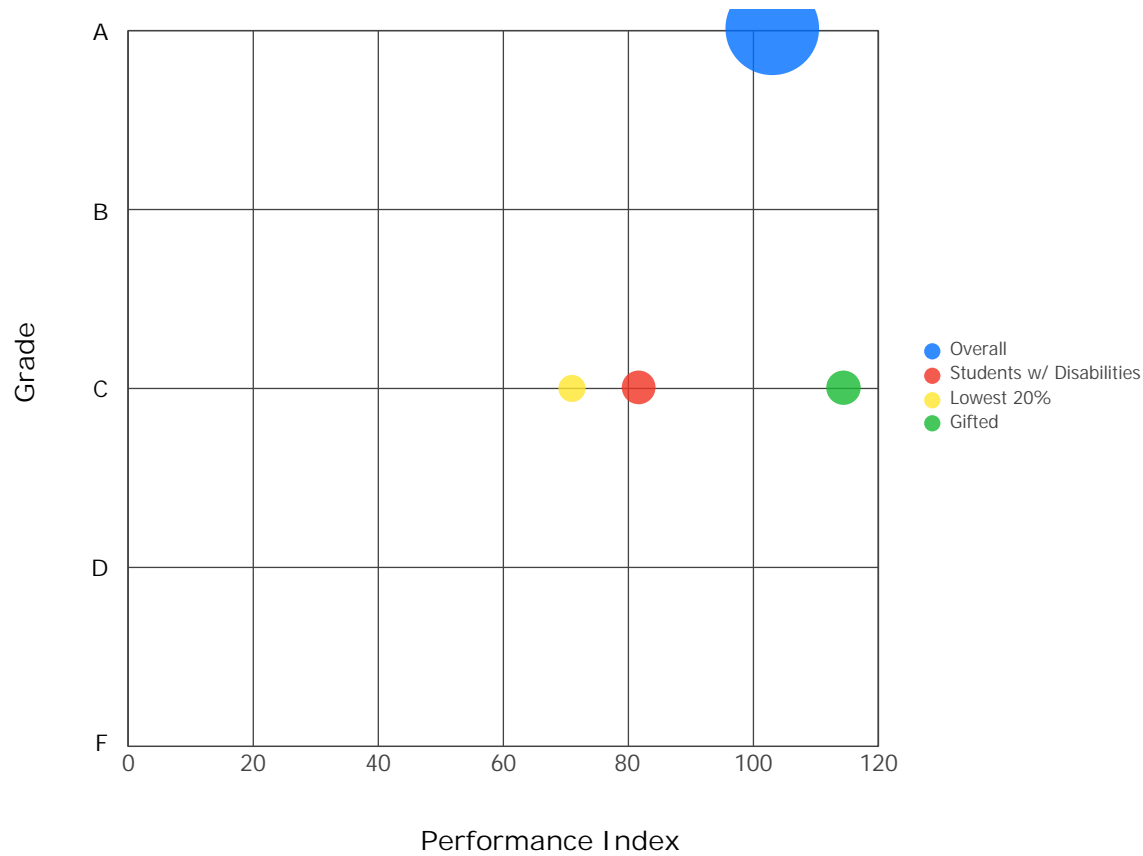
Test Grade	Progress Score		
	Reading	Mathematics	All Tests
All Grades	3.2	8.9	7.6
4th Grade	1.0	9.3	6.6
5th Grade	-2.4	-2.3	-3.0
6th Grade	5.0	0.7	3.9
7th Grade	-2.7	0.9	-1.4
8th Grade	4.4	5.1	6.3

Although Progress scores are not assigned letter grades at this level of detail, the grading scale applied at the Overall (All Students, All Tests) level is:

A = 2.0 and up  
 B = 1.0 to 1.9  
 C = -1.0 to 0.9  
 D = -2.0 to -1.1  
 F = below -2.0

### Progress vs. Performance Index

This bubble chart shows the relationship between each subgroup's performance index results (horizontal axis) to the Value-Added letter grade (vertical axis). The size of the bubble represents the size of the student subgroup.





## Gap Closing



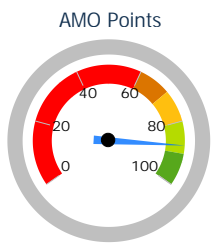
This grade shows how well all students are doing in your district in reading, math, and graduation. It answers the question – Is every student succeeding, regardless of income, race, culture or disability?

COMPONENT GRADE  
Coming in  
2015

GRADE  
**B**

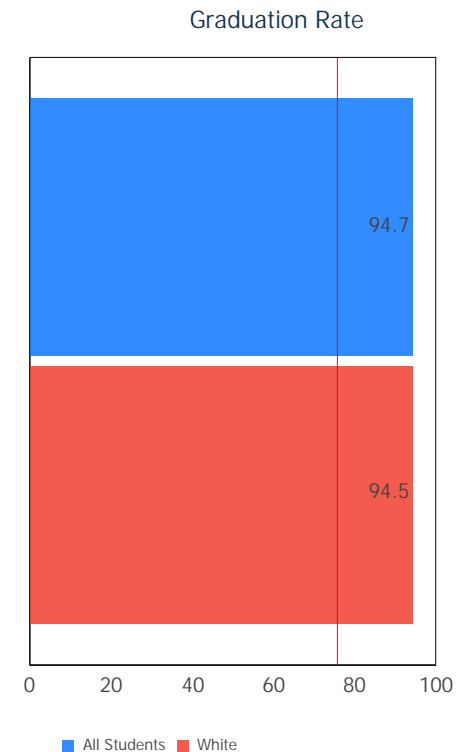
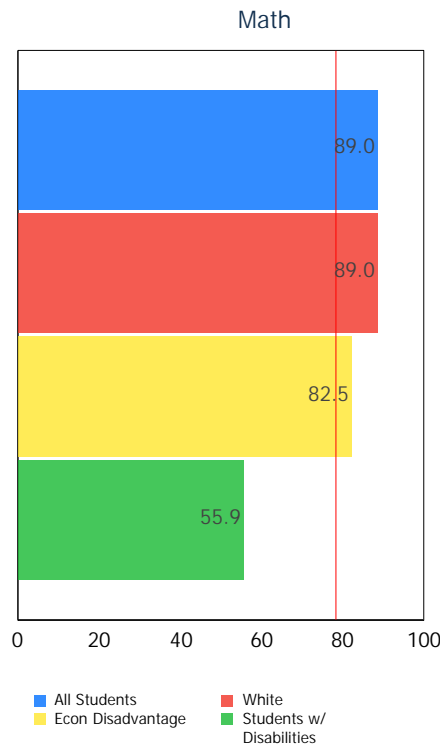
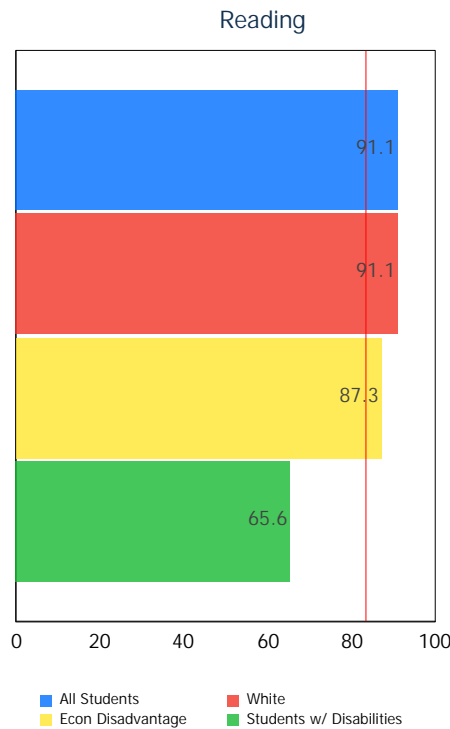
### Annual Measurable Objectives

Annual Measurable Objectives (AMOs) compare the performance of all students to a state goal which is displayed as the red line in the following charts. These charts show how well each group achieves that goal in reading, math and graduation – and emphasize any achievement gaps that exist between groups. The ultimate goal is for all groups to achieve at high levels.



87.5%

- A = 90.0 - 100.0%
- B = 80.0 - 89.9%
- C = 70.0 - 79.9%
- D = 60.0 - 69.9%
- F = 0.0 - 59.9%



The red line on each graph identifies the Annual Measurable Objective. The 2013 AMO for Reading is 83.4%, for Math is 78.5%, and for Graduation Rate is 75.9%. Subgroups with fewer than 30 students are not rated and do not appear on the graphs.

## Graduation Rate

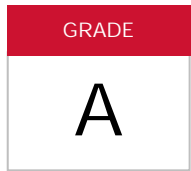


This grade represents the percentage of students whom entered the 9th grade and graduated 4 and 5 years later.

COMPONENT GRADE  
Coming in  
2015

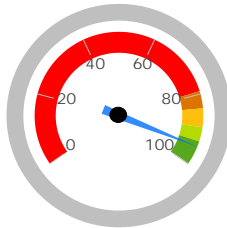
### 4-Year Graduation Rate

The 4-year graduation rate applies to the Class of 2012 who graduated within four years, i.e. students who entered the 9th grade in 2009 and graduated by 2012.

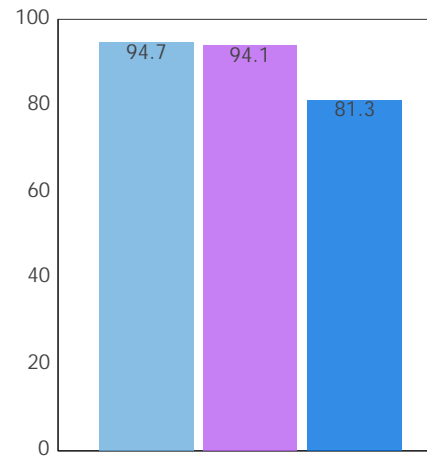


94.7%

A = 93.0 - 100.0%  
B = 89.0 - 92.9%  
C = 84.0 - 88.9%  
D = 79.0 - 83.9%  
F = 0.0 - 78.9%

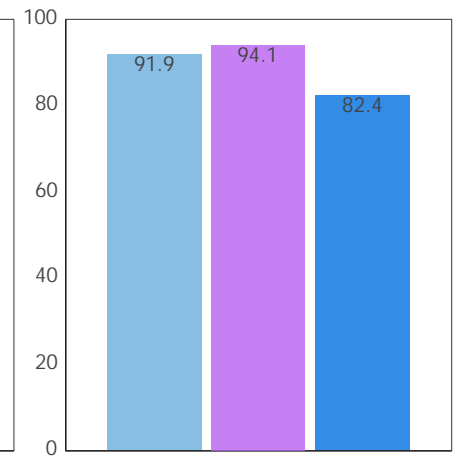


4-Year Rate



District  
State Average  
Similar Districts

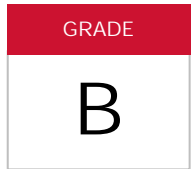
5-Year Rate



District  
State Average  
Similar Districts

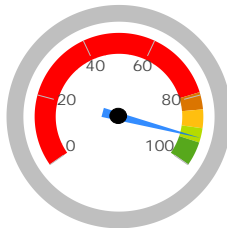
### 5-Year Graduation Rate

The 5-year graduation rate applies to the Class of 2011 who graduated within five years, i.e. students who entered the 9th grade in 2008 and graduated by 2012.

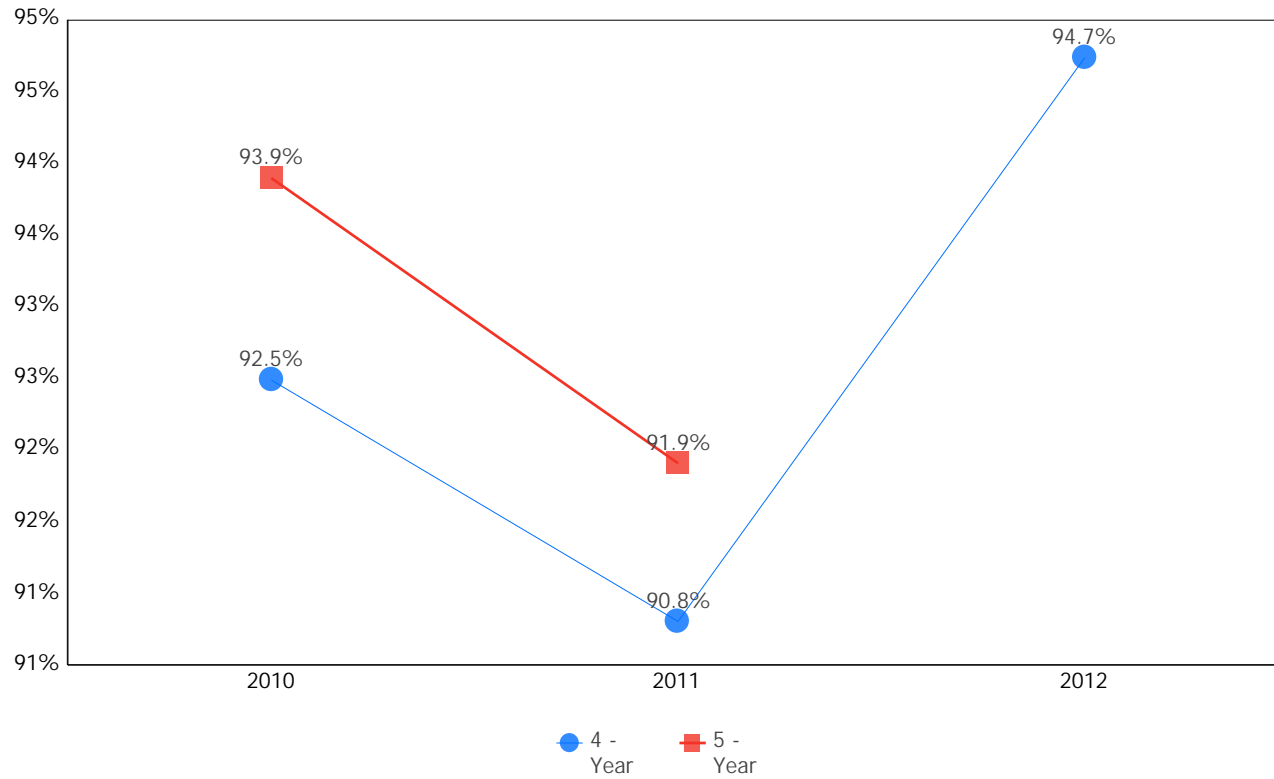


91.9%

A = 95.0 - 100.0%  
B = 90.0 - 94.9%  
C = 85.0 - 89.9%  
D = 80.0 - 84.9%  
F = 0.0 - 79.9%



Graduation Rate Trend



Note: The 5-year graduation rate does not appear in the final year of this graph because the necessary data is not yet available to calculate the 5-year rate for that school year.



Superintendent: Michael R. Shreffler  
 Address: 2309 Locust St S  
 Canal Fulton OH 44614-9389

Phone: (330) 854-2291  
 County: Stark

Directory information current as of the 2012-2013 Report Card publication date

## Your District's Students

Average Daily Enrollment:

1,922

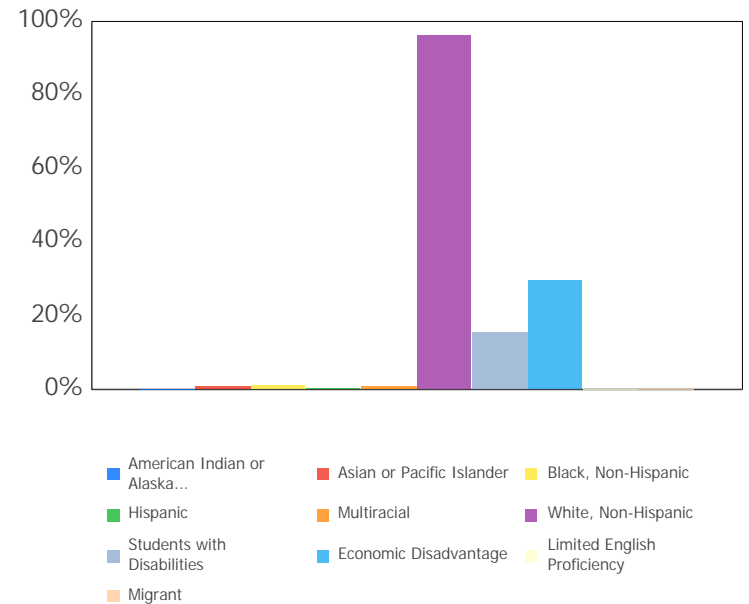
Number of Limited English Proficiency Students Excluded from Accountability Calculations:

--

### Enrollment by Subgroup

	Enrollment #	Enrollment %
Am. Indian / Alaskan Native	NC	
Asian or Pacific Islander	16	0.8%
Black, Non-Hispanic	29	1.5%
Hispanic	13	0.7%
Multiracial	16	0.8%
White, Non-Hispanic	1,849	96.2%
Students with Disabilities	303	15.7%
Economically Disadvantaged	575	29.9%
Limited English Proficiency	NC	
Migrant	NC	

NC = Not Calculated because there are fewer than 10 in the group

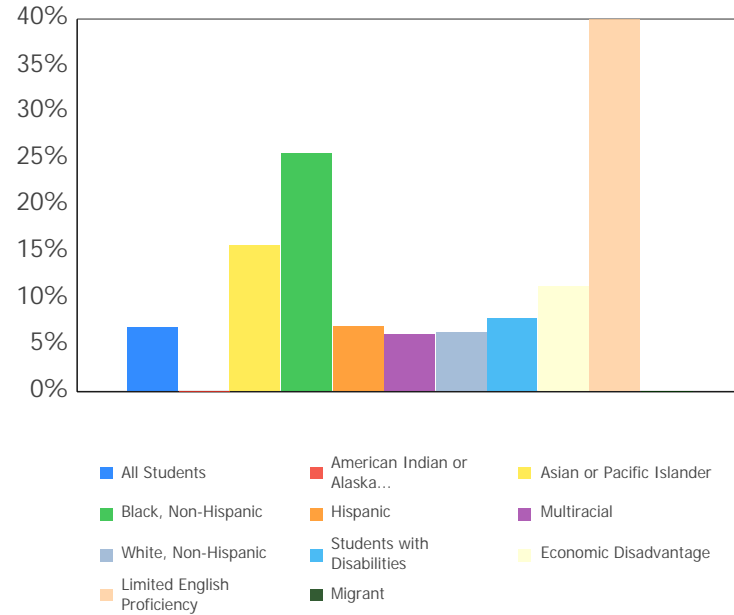


Enrollments of less than 10 students are not shown.

Mobility Rates by Subgroup

	District Mobility %
All Students	6.9%
Am. Indian / Alaskan Native	0.0%
Asian or Pacific Islander	15.8%
Black, Non-Hispanic	25.7%
Hispanic	7.1%
Multiracial	6.3%
White, Non-Hispanic	6.5%
Students with Disabilities	7.9%
Economically Disadvantaged	11.3%
Limited English Proficiency	40.0%
Migrant	

NC = Not Calculated because there are fewer than 10 in the group



This chart shows the percentage of students who, because they moved into or out of the district, did not spend a majority of the school year within the district.

### Your District's Teachers

	All Schools in the District	High Poverty Schools	Low Poverty Schools
Percentage of teachers with at least a Bachelor's Degree	100.0	0.0	100.0
Percentage of teachers with at least a Master's Degree	74.2	0.0	71.9
Percentage of core academic subject and elementary classes not taught by Highly Qualified Teachers	0	--	0
Percentage of core academic subject and elementary classes taught by properly certified teachers	100	--	100
Percentage of core academic subject elementary and secondary classes taught by teachers with temporary, conditional or long-term substitute certification/licensure	0	--	0

High-poverty schools are those ranked in the top quartile based on the percentage of economically disadvantaged students. Low-poverty schools are those ranked in the bottom quartile based on the percentage of economically disadvantaged students. A district may have buildings in both quartiles, in just one quartile or in neither quartile.

NC = Not Calculated because there are fewer than 10 in the group

### Wellness and Physical Education

The extent to which students are successful in meeting the benchmarks contained in Ohio's physical education standards	Compliance with the federal requirement for implementing a local wellness policy	Elected to administer BMI screening	Participation in Physical Activity Pilot Program
Moderate Success			